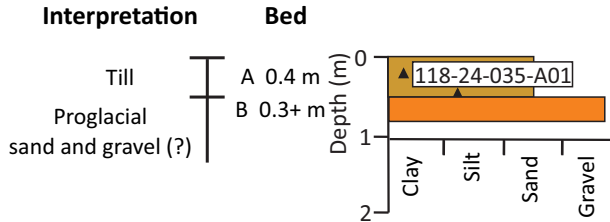


118-24-035

Gravel pit, sub-vertical wall

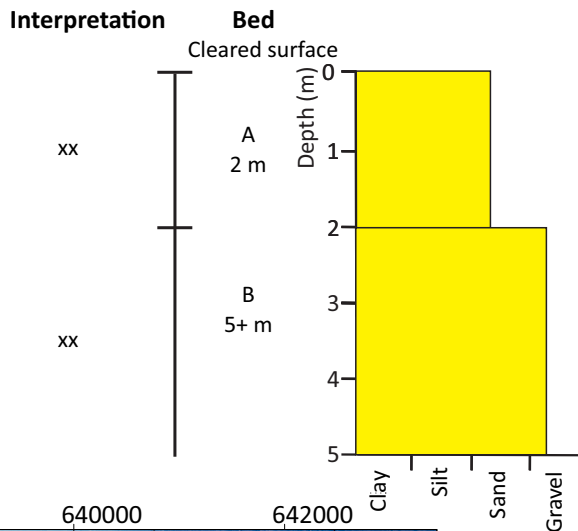
Elevation: 230.4 m (surface)

Easting: 639951 Northing: 5578517 (NAD84, Zone 14)

Southeast edge of pit**Description**

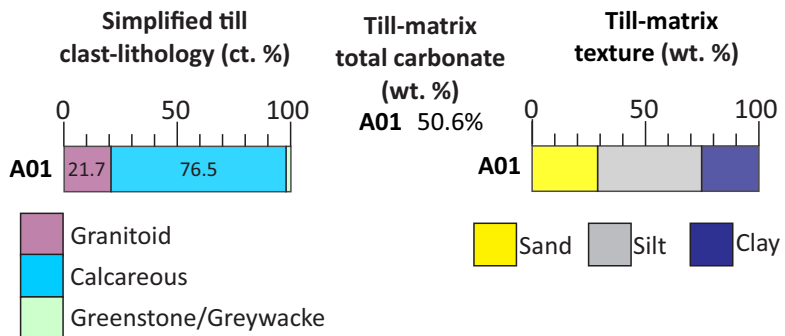
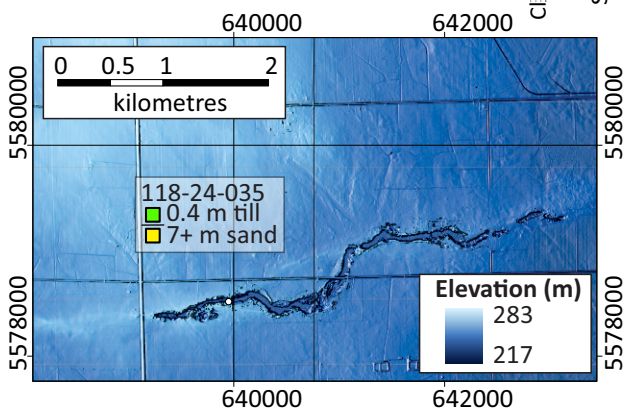
A: diamict; olive brown (2.5Y 4/4), clayey sandy silt matrix with 5% clasts (pebble-sized, subangular to subrounded), massive, moderate compaction, minor blocky structure, no oxidation staining; sharp lower contact.

B: gravel, massive, clast-supported, clasts are pebble-sized and subangular to subrounded and poorly sorted.

**Most of pit (cleared surface)****Description**

A: sand, massive, matrix-supported, well-sorted with 5-10% clasts that are pebble-sized and subangular to subrounded.

B: sand, massive, medium to coarse-grained matrix, moderately sorted with 30% clasts that are pebble-sized and subangular to subrounded; poor exposure; continues at least 1 m below water table.



Historical fieldsites from this feature suggest there may have been 5-6 m of sandy pebble gravel.